

LABOUR FORCE

QUEENSLAND

EMBARGO: 11:30AM (CANBERRA TIME) THURS 15 OCTOBER 1998

C O N T E N T S

	<i>page</i>
Summary of findings	3

TABLES

Labour force status aged 15 and over, Queensland

1-3 Original, seasonally adjusted and trend series	5-7
4-6 Statistical regions	9-11
7 Age by major statistical region	12
8 Persons 15 to 19 years, by attendance at an educational institution	13
9 Persons 20 to 24 years, by attendance at a tertiary institution	13

Employed persons, Queensland

10 Full-time or part-time status	14
11 Average hours worked by status in employment, industry division and occupation group	15
12 Status in employment, industry division and occupation group	16
13 Industry division by occupation group	16

Unemployed persons, Queensland

14-16 Duration of unemployment	17-19
17 Unemployed persons and unemployment rates	20

ADDITIONAL INFORMATION

Special surveys data relating to the labour force	21
Releases of interest	22
Maps showing statistical regions of Queensland	23
Explanatory notes	24
Technical notes	29
Glossary	34

- For information about these and related statistics, contact Information Inquiries on (07) 3222 6351 or refer to the back cover of this publication.

NOTES

FORTHCOMING ISSUES

ISSUE

RELEASE DATE

November 1998

15 January 1999

February 1999

15 April 1999

May 1999

15 July 1999

.....

INQUIRIES

For information about other ABS statistics and services, please refer to the back of this publication.

BRIAN DOYLE

Regional Director, Queensland

SUMMARY OF FINDINGS

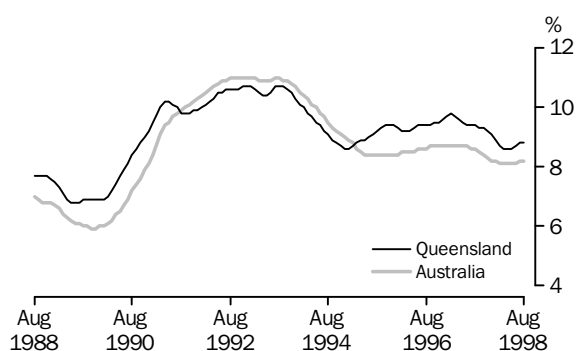
TREND SERIES

In Queensland, employment increased, in trend terms, by 43,300 to 1,613,900 between August 1997 and August 1998 while the number of unemployed persons decreased by 6,000 to 156,000 over the same period. The unemployment rate decreased from 9.4% in August 1997 to 8.8% in August 1998. The participation rate increased from 64.6% in August 1997 to 64.9% in November 1997 and remained at that level until May 1998 then slowly decreased to 64.7% in August 1998. In Australia, in trend terms, employment increased by 188,800 from August 1997 to August 1998 while the number of unemployed persons decreased by 23,400 over the same period.

LABOUR FORCE, QUEENSLAND, TREND SERIES

Particulars	Unit	August 1997	May 1998	June 1998	July 1998	August 1998	Annual change
Employed	'000	1 570.6	1 613.2	1 613.7	1 614.0	1 613.9	2.8 %
Unemployed	'000	162.0	152.3	153.6	155.0	156.0	- 3.7 %
Labour force	'000	1 732.7	1 765.4	1 767.3	1 768.9	1 769.9	2.1 %
Unemployment rate	%	9.4	8.6	8.7	8.8	8.8	- 0.6 pts

UNEMPLOYMENT RATE, TREND SERIES



SEASONALLY ADJUSTED SERIES

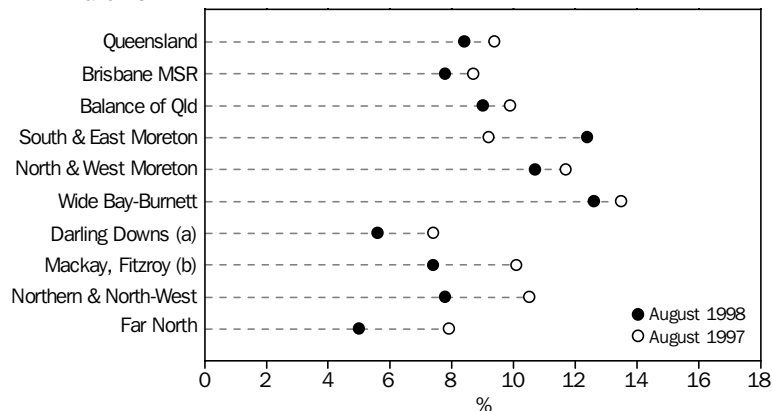
In seasonally adjusted terms, employment in Queensland increased by 49,400 to 1,616,200 between August 1997 and August 1998 while the number of unemployed persons decreased by 13,900 to 152,100 over the same period. The unemployment rate decreased from 9.6% in August 1997 to 8.6% in August 1998.

REGIONAL ESTIMATES (ORIGINAL SERIES)

The unemployment rate for the Brisbane Major Statistical Region (MSR) in August 1998 was 7.8% and for the Balance of Queensland was 9.0%. South and East Brisbane Statistical Division (BSD) Balance had the highest unemployment rate (9.1%) in the Brisbane MSR while the Brisbane City Inner Ring had the lowest rate (6.6%). For the Balance of Queensland, the region with the highest unemployment rate was Wide Bay-Burnett (12.6%) followed by South and East Moreton (12.4%). The Far North Statistical Region had the lowest unemployment rate at 5.0%.

SUMMARY OF FINDINGS *continued*

UNEMPLOYMENT RATE: QUEENSLAND REGIONS



(a) Including South-West. (b) Including Central-West.

YOUTH ESTIMATES

The number of unemployed 15 to 19 year olds in the Queensland labour force decreased 6.5% to 27,400 persons over the year from August 1997 to August 1998, while the number employed increased by 3,600 or 3.1% to 121,100 persons. The unemployment rate for this group declined from 20.0% in August 1997 to 18.5% in August 1998. There were 183,900 employed 20 to 24 year olds in August 1998, a marginal increase over the previous 12 months. The unemployment rate for this group decreased from 15.3% to 12.9% over the same period.

INDUSTRY ESTIMATES

In August 1998, the retail trade industry in Queensland employed the most persons with 245,000. This was an increase of 1.6% on the figure for August 1997. Employment in the manufacturing industry increased 3,300 (1.9%) to 181,400.

EMPLOYMENT AND UNEMPLOYMENT FOR SELECTED GROUPS

Particulars	EMPLOYED PERSONS.....			UNEMPLOYED PERSONS.....		
	August 1997 '000	August 1998 '000	Annual change %	August 1997 '000	August 1998 '000	Annual change %
Males	882.9	904.5	2.4	93.7	89.6	-4.3
Females	672.1	699.2	4.0	67.1	57.9	-13.7
Persons aged (years)						
15-19	117.5	121.1	3.1	29.3	27.4	-6.5
20-24	181.4	183.9	1.4	32.6	27.3	-16.3
25-44	775.7	794.9	2.5	69.2	60.7	-12.3
45 and over	480.3	503.8	4.9	29.6	32.2	8.8
Industry of current employment, or of last full-time job if unemployed						
Manufacturing	178.1	181.4	1.9	11.1	16.0	44.1
Construction	118.7	130.5	9.9	9.7	7.1	-26.8
Wholesale trade	76.2	99.0	29.9	4.1	4.4	7.3
Retail trade	241.2	245.0	1.6	14.1	12.5	-11.3
Property and business services	150.2	152.7	1.7	7.3	6.3	-13.7
Health and community services	148.7	160.6	8.0	3.8	*2.8	-26.3
Other industries	641.8	634.5	-1.2	32.3	26.0	-19.5
Other unemployed persons	78.4	72.4	-7.7
Queensland	1 555.0	1 603.7	3.1	160.8	147.5	-8.3

TABLE 1 — LABOUR FORCE STATUS: ORIGINAL SERIES, QUEENSLAND

Month	Employed		Unemployed		Labour force	Not in labour force	Civilian population aged 15 years and over	Unemployment rate	Participation rate
	Full-time	Total	Looking for full-time work	Total					
	'000	'000	'000	'000	'000	'000	'000	%	%
MALES									
1997 —									
June	768.4	888.0	75.9	86.3	974.3	349.9	1,324.1	8.9	73.6
July	790.7	894.4	79.1	88.8	983.2	343.0	1,326.2	9.0	74.1
August	772.4	882.9	85.0	93.7	976.6	351.6	1,328.2	9.6	73.5
September	781.3	894.3	77.8	90.1	984.3	346.0	1,330.3	9.1	74.0
October	787.1	905.0	74.5	88.0	993.0	339.8	1,332.8	8.9	74.5
November	781.5	893.8	79.2	91.4	985.2	350.2	1,335.4	9.3	73.8
December	795.7	910.6	79.4	92.5	1,003.1	334.9	1,338.0	9.2	75.0
1998 —									
January	792.6	901.2	87.8	99.2	1,000.4	339.7	1,340.1	9.9	74.6
February	792.1	905.2	87.2	101.4	1,006.6	335.7	1,342.3	10.1	75.0
March	789.0	905.5	79.2	92.4	997.9	346.6	1,344.4	9.3	74.2
April	793.1	903.0	76.3	88.6	991.6	355.0	1,346.6	8.9	73.6
May	783.1	903.2	76.0	87.1	990.3	358.6	1,348.8	8.8	73.4
June	791.2	912.9	76.8	86.9	999.8	351.3	1,351.1	8.7	74.0
July	799.6	911.0	80.8	91.6	1,002.6	350.4	1,353.0	9.1	74.1
August	791.0	904.5	78.1	89.6	994.1	360.8	1,354.9	9.0	73.4
FEMALES									
1997 —									
June	368.5	680.8	42.4	63.3	744.0	604.6	1,348.6	8.5	55.2
July	382.0	682.6	44.4	61.2	743.8	607.0	1,350.8	8.2	55.1
August	379.9	672.1	46.4	67.1	739.2	613.7	1,352.9	9.1	54.6
September	382.9	695.1	42.7	67.4	762.5	592.6	1,355.1	8.8	56.3
October	382.5	694.6	41.2	62.6	757.3	600.3	1,357.6	8.3	55.8
November	386.2	697.1	43.0	64.4	761.5	598.6	1,360.1	8.5	56.0
December	404.5	696.6	45.6	63.8	760.4	602.3	1,362.7	8.4	55.8
1998 —									
January	386.6	670.5	46.6	66.0	736.5	628.2	1,364.7	9.0	54.0
February	390.6	698.2	53.7	75.0	773.2	593.5	1,366.7	9.7	56.6
March	382.3	696.2	43.8	65.1	761.3	607.4	1,368.7	8.6	55.6
April	390.7	704.8	42.1	64.9	769.7	601.2	1,370.8	8.4	56.1
May	387.9	706.2	41.0	60.2	766.4	606.5	1,373.0	7.9	55.8
June	388.2	708.7	43.0	65.2	774.0	601.2	1,375.1	8.4	56.3
July	391.9	704.8	41.4	59.5	764.4	612.6	1,377.0	7.8	55.5
August	381.0	699.2	37.8	57.9	757.1	621.7	1,378.8	7.7	54.9
PERSONS									
1997 —									
June	1,137.0	1,568.8	118.3	149.5	1,718.3	954.5	2,672.8	8.7	64.3
July	1,172.7	1,577.0	123.5	150.0	1,727.0	950.0	2,676.9	8.7	64.5
August	1,152.3	1,555.0	131.5	160.8	1,715.8	965.4	2,681.1	9.4	64.0
September	1,164.2	1,589.4	120.5	157.4	1,746.8	938.6	2,685.3	9.0	65.0
October	1,169.6	1,599.6	115.7	150.6	1,750.3	940.1	2,690.4	8.6	65.1
November	1,167.7	1,590.8	122.2	155.9	1,746.7	948.8	2,695.5	8.9	64.8
December	1,200.2	1,607.2	125.0	156.3	1,763.5	937.1	2,700.6	8.9	65.3
1998 —									
January	1,179.2	1,571.6	134.4	165.2	1,736.9	967.9	2,704.8	9.5	64.2
February	1,182.7	1,603.4	140.9	176.5	1,779.8	929.1	2,709.0	9.9	65.7
March	1,171.2	1,601.7	123.0	157.5	1,759.2	953.9	2,713.1	9.0	64.8
April	1,183.8	1,607.8	118.4	153.5	1,761.3	956.2	2,717.5	8.7	64.8
May	1,170.9	1,609.4	117.1	147.3	1,756.7	965.1	2,721.8	8.4	64.5
June	1,179.4	1,621.6	119.8	152.2	1,773.7	952.5	2,726.2	8.6	65.1
July	1,191.5	1,615.8	122.3	151.2	1,767.0	963.0	2,729.9	8.6	64.7
August	1,172.1	1,603.7	115.9	147.5	1,751.2	982.5	2,733.7	8.4	64.1

TABLE 2 — LABOUR FORCE STATUS: SEASONALLY ADJUSTED SERIES, QUEENSLAND

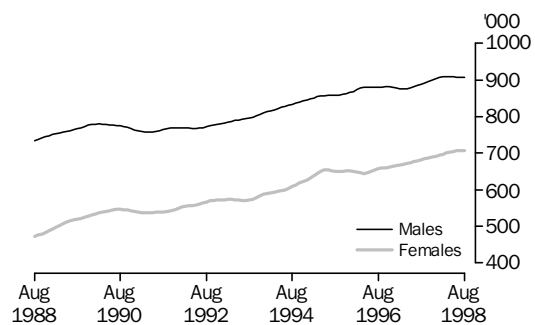
	<i>Employed</i>	<i>Unemployed</i>	<i>Labour force</i>	<i>Unemployment rate</i>	<i>Participation rate</i>
<i>Month</i>	'000	'000	'000	%	%
MALES					
1997—					
June	883.9	89.4	973.3	9.2	73.5
July	887.9	95.7	983.6	9.7	74.2
August	887.3	96.3	983.6	9.8	74.1
September	886.6	94.6	981.2	9.6	73.8
October	900.4	92.8	993.2	9.3	74.5
November	895.4	95.2	990.6	9.6	74.2
December	899.8	94.6	994.4	9.5	74.3
1998—					
January	910.8	89.2	1,000.0	8.9	74.6
February	909.1	93.2	1,002.3	9.3	74.7
March	911.3	85.9	997.3	8.6	74.2
April	906.7	85.8	992.5	8.6	73.7
May	908.0	88.3	996.3	8.9	73.9
June	908.7	90.1	998.8	9.0	73.9
July	904.3	98.9	1,003.2	9.9	74.1
August	909.0	91.9	1,001.0	9.2	73.9
FEMALES					
1997—					
June	678.6	65.2	743.7	8.8	55.1
July	681.7	64.5	746.2	8.6	55.2
August	679.5	69.7	749.2	9.3	55.4
September	683.8	68.4	752.2	9.1	55.5
October	691.7	68.4	760.1	9.0	56.0
November	690.3	67.5	757.8	8.9	55.7
December	688.0	64.4	752.3	8.6	55.2
1998—					
January	690.5	64.9	755.4	8.6	55.4
February	702.0	65.2	767.2	8.5	56.1
March	695.5	60.4	756.0	8.0	55.2
April	705.8	64.1	769.9	8.3	56.2
May	708.1	59.3	767.4	7.7	55.9
June	706.4	67.2	773.6	8.7	56.3
July	703.6	62.9	766.6	8.2	55.7
August	707.1	60.1	767.2	7.8	55.6
PERSONS					
1997—					
June	1,562.4	154.6	1,717.0	9.0	64.2
July	1,569.6	160.2	1,729.8	9.3	64.6
August	1,566.8	166.0	1,732.8	9.6	64.6
September	1,570.4	163.0	1,733.4	9.4	64.6
October	1,592.1	161.2	1,753.2	9.2	65.2
November	1,585.6	162.8	1,748.4	9.3	64.9
December	1,587.8	159.0	1,746.8	9.1	64.7
1998—					
January	1,601.3	154.2	1,755.4	8.8	64.9
February	1,611.1	158.3	1,769.5	8.9	65.3
March	1,606.9	146.4	1,753.2	8.3	64.6
April	1,612.5	149.9	1,762.4	8.5	64.9
May	1,616.1	147.6	1,763.6	8.4	64.8
June	1,615.0	157.3	1,772.4	8.9	65.0
July	1,607.9	161.8	1,769.8	9.1	64.8
August	1,616.2	152.1	1,768.2	8.6	64.7

TABLE 3 — LABOUR FORCE STATUS: TREND SERIES, QUEENSLAND

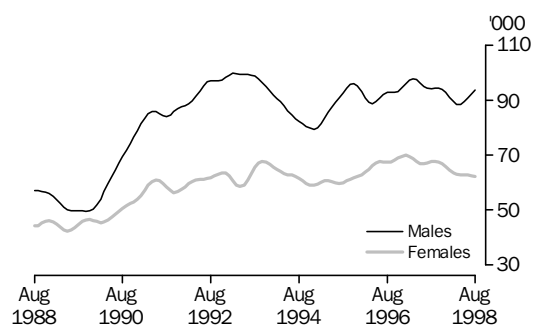
	<i>Employed</i>	<i>Unemployed</i>	<i>Labour force</i>	<i>Unemployment rate</i>	<i>Participation rate</i>
<i>Month</i>	<i>'000</i>	<i>'000</i>	<i>'000</i>	<i>%</i>	<i>%</i>
MALES					
1997—					
June	881.8	95.1	977.0	9.7	73.8
July	885.2	94.5	979.6	9.6	73.9
August	888.3	94.3	982.6	9.6	74.0
September	891.4	94.5	985.9	9.6	74.1
October	894.9	94.6	989.4	9.6	74.2
November	898.8	94.1	992.9	9.5	74.4
December	902.8	92.9	995.7	9.3	74.4
1998—					
January	906.2	91.1	997.3	9.1	74.4
February	908.4	89.5	997.9	9.0	74.3
March	909.2	88.5	997.7	8.9	74.2
April	909.0	88.5	997.5	8.9	74.1
May	908.3	89.5	997.7	9.0	74.0
June	907.6	90.9	998.5	9.1	73.9
July	907.1	92.4	999.6	9.2	73.9
August	907.0	93.7	1,000.7	9.4	73.9
FEMALES					
1997—					
June	676.7	66.9	743.5	9.0	55.1
July	679.5	67.3	746.8	9.0	55.3
August	682.3	67.7	750.0	9.0	55.4
September	685.0	67.8	752.9	9.0	55.6
October	687.2	67.6	754.8	9.0	55.6
November	689.1	67.0	756.2	8.9	55.6
December	691.3	66.0	757.2	8.7	55.6
1998—					
January	694.0	64.6	758.6	8.5	55.6
February	697.1	63.6	760.6	8.4	55.7
March	700.1	63.1	763.2	8.3	55.8
April	702.9	62.9	765.8	8.2	55.9
May	704.9	62.8	767.7	8.2	55.9
June	706.1	62.7	768.8	8.2	55.9
July	706.9	62.5	769.4	8.1	55.9
August	706.9	62.3	769.3	8.1	55.8
PERSONS					
1997—					
June	1,558.5	162.0	1,720.5	9.4	64.4
July	1,564.7	161.7	1,726.4	9.4	64.5
August	1,570.6	162.0	1,732.7	9.4	64.6
September	1,576.4	162.3	1,738.7	9.3	64.7
October	1,582.0	162.2	1,744.3	9.3	64.8
November	1,588.0	161.1	1,749.1	9.2	64.9
December	1,594.1	158.8	1,752.9	9.1	64.9
1998—					
January	1,600.2	155.7	1,755.9	8.9	64.9
February	1,605.5	153.1	1,758.6	8.7	64.9
March	1,609.3	151.6	1,760.9	8.6	64.9
April	1,611.9	151.4	1,763.3	8.6	64.9
May	1,613.2	152.3	1,765.4	8.6	64.9
June	1,613.7	153.6	1,767.3	8.7	64.8
July	1,614.0	155.0	1,768.9	8.8	64.8
August	1,613.9	156.0	1,769.9	8.8	64.7

LABOUR FORCE STATUS: Trend Series, Queensland

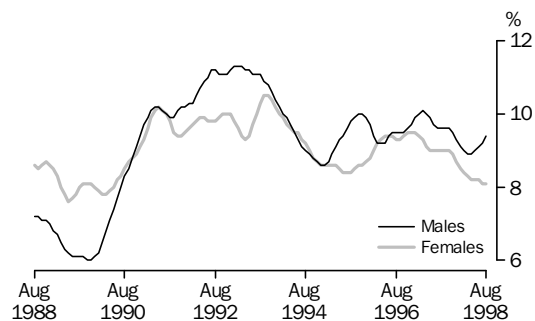
EMPLOYED MALES AND FEMALES



UNEMPLOYED MALES AND FEMALES



UNEMPLOYMENT RATE



PARTICIPATION RATE

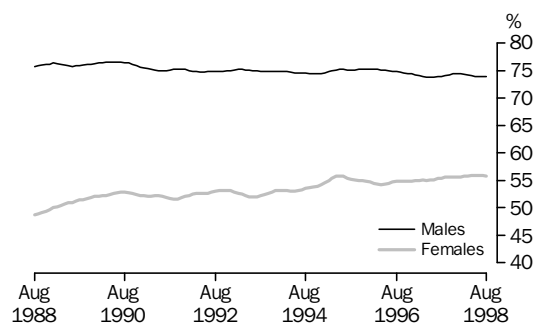


TABLE 4 — LABOUR FORCE STATUS: STATISTICAL REGIONS, QUEENSLAND, AUGUST 1998

Region	Employed			Unemployed	Labour force	Unemployment rate	Participation rate
	Full-time	Part-time	Total				
	'000	'000	'000	'000	'000	%	%
MALES							
<i>Brisbane</i>	359.5	51.3	410.7	38.2	449.0	8.5	73.4
Brisbane City Inner Ring	85.7	13.6	99.3	10.4	109.7	9.5	72.8
Brisbane City Outer Ring	109.4	17.7	127.1	10.2	137.2	7.4	72.1
South and East BSD Balance	78.6	9.0	87.6	8.4	96.0	8.7	76.5
North and West BSD Balance	85.8	11.0	96.7	9.3	106.1	8.8	73.3
Gold Coast (Part A and Part B)(a)	77.2	16.6	93.8	12.1	105.9	11.4	67.7
<i>Balance of Queensland</i>	431.6	62.2	493.8	51.3	545.1	9.4	73.3
South and East Moreton	74.0	17.2	91.2	11.2	102.4	11.0	68.3
North and West Moreton	60.2	11.1	71.3	10.2	81.5	12.5	70.8
Wide Bay-Burnett	42.0	6.9	48.9	7.3	56.2	12.9	65.0
Darling Downs and South-West	64.1	7.4	71.6	5.6	77.1	7.2	78.9
Mackay, Fitzroy and Central-West	86.2	6.9	93.1	7.7	100.8	7.6	76.5
Northern and North-West	55.8	7.4	63.2	5.9	69.1	8.5	79.4
Far North	49.2	5.3	54.5	3.5	58.0	6.0	76.7
Queensland	791.0	113.5	904.5	89.6	994.1	9.0	73.4
FEMALES							
<i>Brisbane</i>	190.3	138.9	329.3	24.2	353.5	6.9	55.8
Brisbane City Inner Ring	61.6	31.4	92.9	3.2	96.1	3.3	58.4
Brisbane City Outer Ring	54.5	45.7	100.2	7.2	107.4	6.7	55.4
South and East BSD Balance	36.1	27.2	63.3	6.7	69.9	9.5	54.7
North and West BSD Balance	38.2	34.7	72.8	7.2	80.1	9.0	54.2
Gold Coast (Part A and Part B)(a)	37.5	33.3	70.8	11.4	82.2	13.9	53.5
<i>Balance of Queensland</i>	190.7	179.2	369.9	33.7	403.6	8.3	54.2
South and East Moreton	39.2	31.4	70.6	11.6	82.2	14.1	54.5
North and West Moreton	28.0	36.5	64.5	6.2	70.6	8.7	53.4
Wide Bay-Burnett	16.1	17.6	33.7	4.6	38.4	12.1	42.2
Darling Downs and South-West	28.0	25.9	53.9	* 1.8	55.7	* 3.3	58.9
Mackay, Fitzroy and Central-West	32.3	29.8	62.1	4.7	66.9	7.1	55.3
Northern and North-West	22.8	21.3	44.2	3.1	47.3	6.6	57.6
Far North	24.3	16.7	41.0	* 1.5	42.6	* 3.6	58.1
Queensland	381.0	318.2	699.2	57.9	757.1	7.7	54.9
PERSONS							
<i>Brisbane</i>	549.8	190.2	740.0	62.5	802.5	7.8	64.4
Brisbane City Inner Ring	147.3	45.0	192.3	13.5	205.8	6.6	65.3
Brisbane City Outer Ring	163.9	63.4	227.3	17.3	244.6	7.1	63.7
South and East BSD Balance	114.7	36.2	150.9	15.0	165.9	9.1	65.5
North and West BSD Balance	123.9	45.6	169.6	16.6	186.1	8.9	63.6
Gold Coast (Part A and Part B)(a)	114.8	49.9	164.6	23.5	188.1	12.5	60.6
<i>Balance of Queensland</i>	622.2	241.5	863.7	85.0	948.8	9.0	63.7
South and East Moreton	113.2	48.6	161.8	22.9	184.6	12.4	61.4
North and West Moreton	88.2	47.5	135.8	16.4	152.1	10.7	61.5
Wide Bay-Burnett	58.1	24.6	82.7	11.9	94.6	12.6	53.3
Darling Downs and South-West	92.1	33.4	125.4	7.4	132.8	5.6	69.1
Mackay, Fitzroy and Central-West	118.5	36.7	155.2	12.4	167.7	7.4	66.3
Northern and North-West	78.6	28.7	107.4	9.0	116.4	7.8	68.8
Far North	73.5	22.0	95.5	5.0	100.5	5.0	67.5
Queensland	1,172.1	431.7	1,603.7	147.5	1,751.2	8.4	64.1

(a) Part (A) included in South and East BSD Balance and Part (B) included in South and East Moreton.

TABLE 5 — LABOUR FORCE STATUS: STATISTICAL REGIONS, QUEENSLAND, JULY 1998

Region	Employed			Unemployed	Labour force	Unemployment rate	Participation rate
	Full-time	Part-time	Total				
	'000	'000	'000	'000	'000	%	%
MALES							
<i>Brisbane</i>	367.4	53.1	420.5	37.2	457.7	8.1	75.0
Brisbane City Inner Ring	92.2	13.8	106.0	8.1	114.1	7.1	72.7
Brisbane City Outer Ring	115.8	18.3	134.1	7.7	141.8	5.4	74.2
South and East BSD Balance	74.4	8.3	82.7	10.3	93.0	11.0	78.6
North and West BSD Balance	85.0	12.7	97.7	11.2	108.9	10.3	75.5
Gold Coast (Part A and Part B)(a)	80.2	17.4	97.6	13.8	111.4	12.4	69.6
<i>Balance of Queensland</i>	432.3	58.2	490.4	54.4	544.9	10.0	73.4
South and East Moreton	79.3	17.1	96.4	12.7	109.1	11.7	70.2
North and West Moreton	63.2	11.6	74.8	10.3	85.1	12.1	72.0
Wide Bay-Burnett	41.5	6.9	48.4	7.6	56.0	13.6	61.0
Darling Downs and South-West	60.5	6.5	67.0	4.6	71.6	6.4	76.6
Mackay, Fitzroy and Central-West	86.2	6.2	92.4	8.5	100.9	8.4	79.4
Northern and North-West	53.0	5.3	58.3	5.9	64.1	9.1	78.5
Far North	48.7	4.6	53.2	4.9	58.1	8.4	77.5
Queensland	799.6	111.3	911.0	91.6	1,002.6	9.1	74.1
FEMALES							
<i>Brisbane</i>	197.3	136.7	334.0	27.7	361.7	7.7	57.1
Brisbane City Inner Ring	65.2	32.2	97.5	4.6	102.0	4.5	62.3
Brisbane City Outer Ring	57.3	41.4	98.8	8.2	107.0	7.7	54.9
South and East BSD Balance	38.0	27.7	65.7	5.8	71.5	8.1	56.6
North and West BSD Balance	36.7	35.4	72.0	9.1	81.2	11.2	54.8
Gold Coast (Part A and Part B)(a)	39.7	35.5	75.1	5.7	80.8	7.0	52.5
<i>Balance of Queensland</i>	194.6	176.2	370.8	31.8	402.6	7.9	54.1
South and East Moreton	41.0	34.4	75.4	6.2	81.6	7.6	53.4
North and West Moreton	30.1	35.2	65.2	5.7	70.9	8.0	54.8
Wide Bay-Burnett	17.0	17.9	34.9	5.0	39.9	12.5	43.3
Darling Downs and South-West	28.0	23.6	51.6	* 2.7	54.3	* 5.0	57.9
Mackay, Fitzroy and Central-West	33.0	26.7	59.6	6.0	65.6	9.2	55.4
Northern and North-West	23.1	19.2	42.3	4.2	46.5	9.1	55.6
Far North	22.6	19.2	41.8	* 2.0	43.8	* 4.5	59.9
Queensland	391.9	312.9	704.8	59.5	764.4	7.8	55.5
PERSONS							
<i>Brisbane</i>	564.7	189.8	754.5	65.0	819.5	7.9	65.9
Brisbane City Inner Ring	157.4	46.0	203.4	12.7	216.1	5.9	67.4
Brisbane City Outer Ring	173.1	59.8	232.9	15.9	248.8	6.4	64.4
South and East BSD Balance	112.5	36.0	148.4	16.1	164.5	9.8	67.2
North and West BSD Balance	121.7	48.0	169.7	20.3	190.0	10.7	65.0
Gold Coast (Part A and Part B)(a)	119.8	52.9	172.7	19.4	192.2	10.1	61.2
<i>Balance of Queensland</i>	626.8	234.4	861.3	86.2	947.5	9.1	63.8
South and East Moreton	120.2	51.5	171.8	18.9	190.7	9.9	61.9
North and West Moreton	93.2	46.8	140.0	15.9	156.0	10.2	63.0
Wide Bay-Burnett	58.5	24.8	83.2	12.6	95.9	13.2	52.2
Darling Downs and South-West	88.4	30.1	118.6	7.4	125.9	5.8	67.2
Mackay, Fitzroy and Central-West	119.1	32.9	152.0	14.5	166.5	8.7	67.8
Northern and North-West	76.1	24.5	100.6	10.1	110.6	9.1	66.9
Far North	71.3	23.8	95.1	6.8	101.9	6.7	68.8
Queensland	1,191.5	424.3	1,615.8	151.2	1,767.0	8.6	64.7

(a) Part (A) included in South and East BSD Balance and Part (B) included in South and East Moreton.

TABLE 6 — LABOUR FORCE STATUS: STATISTICAL REGIONS, QUEENSLAND, JUNE 1998

Region	Employed			Unemployed	Labour force	Unemployment rate	Participation rate
	Full-time	Part-time	Total				
	'000	'000	'000	'000	'000	%	%
MALES							
<i>Brisbane</i>	368.1	54.4	422.5	37.1	459.6	8.1	75.4
Brisbane City Inner Ring	92.4	15.0	107.5	7.1	114.6	6.2	71.5
Brisbane City Outer Ring	115.8	18.3	134.2	9.4	143.5	6.5	74.7
South and East BSD Balance	74.0	8.7	82.7	9.3	92.0	10.1	79.6
North and West BSD Balance	85.9	12.3	98.2	11.4	109.6	10.4	77.1
Gold Coast (Part A and Part B)(a)	78.1	19.7	97.8	10.7	108.5	9.8	67.7
<i>Balance of Queensland</i>	423.1	67.3	490.3	49.8	540.2	9.2	72.9
South and East Moreton	75.4	20.8	96.1	9.7	105.8	9.2	68.3
North and West Moreton	61.3	12.3	73.6	10.5	84.1	12.5	71.5
Wide Bay-Burnett	39.2	7.1	46.3	9.1	55.4	16.4	63.3
Darling Downs and South-West	58.1	6.7	64.9	3.9	68.7	5.6	75.8
Mackay, Fitzroy and Central-West	87.2	7.9	95.1	8.4	103.5	8.1	79.8
Northern and North-West	52.8	7.9	60.7	3.7	64.4	5.7	76.9
Far North	48.9	4.6	53.6	4.6	58.2	7.9	75.7
Queensland	791.2	121.7	912.9	86.9	999.8	8.7	74.0
FEMALES							
<i>Brisbane</i>	195.3	144.9	340.2	30.5	370.7	8.2	58.6
Brisbane City Inner Ring	62.7	32.4	95.0	4.2	99.3	4.2	64.3
Brisbane City Outer Ring	58.2	42.6	100.8	9.9	110.7	9.0	56.2
South and East BSD Balance	35.5	29.9	65.4	7.0	72.4	9.7	56.4
North and West BSD Balance	38.9	40.0	79.0	9.3	88.3	10.6	57.8
Gold Coast (Part A and Part B)(a)	40.6	33.4	74.0	7.1	81.2	8.8	52.1
<i>Balance of Queensland</i>	192.9	175.6	368.5	34.7	403.2	8.6	54.3
South and East Moreton	41.2	32.2	73.4	6.4	79.9	8.1	52.8
North and West Moreton	27.0	35.4	62.4	4.5	66.9	6.8	53.3
Wide Bay-Burnett	18.5	17.0	35.5	6.3	41.8	15.1	46.4
Darling Downs and South-West	26.6	24.9	51.6	3.0	54.6	5.5	57.3
Mackay, Fitzroy and Central-West	34.5	26.5	61.0	6.5	67.5	9.6	56.8
Northern and North-West	23.5	22.0	45.5	4.6	50.1	9.2	57.8
Far North	21.5	17.6	39.1	3.3	42.5	7.9	56.8
Queensland	388.2	320.5	708.7	65.2	774.0	8.4	56.3
PERSONS							
<i>Brisbane</i>	563.5	199.3	762.8	67.6	830.3	8.1	66.8
Brisbane City Inner Ring	155.1	47.4	202.5	11.3	213.8	5.3	68.0
Brisbane City Outer Ring	174.1	60.9	235.0	19.3	254.3	7.6	65.3
South and East BSD Balance	109.5	38.6	148.2	16.3	164.4	9.9	67.4
North and West BSD Balance	124.8	52.3	177.2	20.7	197.8	10.5	67.1
Gold Coast (Part A and Part B)(a)	118.7	53.2	171.9	17.8	189.7	9.4	60.0
<i>Balance of Queensland</i>	615.9	242.9	858.8	84.6	943.4	9.0	63.6
South and East Moreton	116.6	53.0	169.6	16.2	185.7	8.7	60.6
North and West Moreton	88.3	47.7	135.9	15.0	151.0	10.0	62.1
Wide Bay-Burnett	57.8	24.0	81.8	15.4	97.2	15.8	54.8
Darling Downs and South-West	84.8	31.7	116.4	6.9	123.3	5.6	66.3
Mackay, Fitzroy and Central-West	121.8	34.4	156.1	14.8	171.0	8.7	68.8
Northern and North-West	76.3	29.9	106.2	8.3	114.5	7.3	67.2
Far North	70.5	22.3	92.7	7.9	100.6	7.9	66.4
Queensland	1,179.4	442.2	1,621.6	152.2	1,773.7	8.6	65.1

(a) Part (A) included in South and East BSD Balance and Part (B) included in South and East Moreton.

TABLE 7 — LABOUR FORCE STATUS: AGE BY MAJOR STATISTICAL REGION, QUEENSLAND, AUGUST 1998

Age group (years)	Employed			Unemployed	Labour force	Unemployment rate	Participation rate
	Full-time	Part-time	Total				
	'000	'000	'000	'000	'000	%	%
BRISBANE MAJOR STATISTICAL REGION							
15-24	79.0	61.4	140.4	24.8	165.2	15.0	67.2
15-19	16.5	35.5	52.0	11.2	63.2	17.7	54.1
20-24	62.4	25.9	88.4	13.6	101.9	13.3	79.0
25-44	298.0	75.7	373.8	25.0	398.7	6.3	81.1
45 and over	172.8	53.0	225.8	12.7	238.6	5.3	47.0
Total	549.8	190.2	740.0	62.5	802.5	7.8	64.4
BALANCE OF QUEENSLAND							
15-24	98.4	66.2	164.6	29.9	194.5	15.4	72.4
15-19	26.4	42.6	69.1	16.2	85.3	19.0	61.8
20-24	72.0	23.6	95.6	13.7	109.3	12.5	83.6
25-44	321.8	99.4	421.1	35.7	456.8	7.8	80.3
45 and over	202.0	75.9	278.0	19.4	297.4	6.5	45.7
Total	622.2	241.5	863.7	85.0	948.8	9.0	63.7
QUEENSLAND							
15-24	177.4	127.6	305.0	54.7	359.7	15.2	69.9
15-19	43.0	78.1	121.1	27.4	148.5	18.5	58.3
20-24	134.4	49.5	183.9	27.3	211.2	12.9	81.3
25-44	619.8	175.1	794.9	60.7	855.6	7.1	80.6
45 and over	374.9	128.9	503.8	32.2	536.0	6.0	46.3
Total	1,172.1	431.7	1,603.7	147.5	1,751.2	8.4	64.1

UNEMPLOYMENT RATE BY AGE, QUEENSLAND

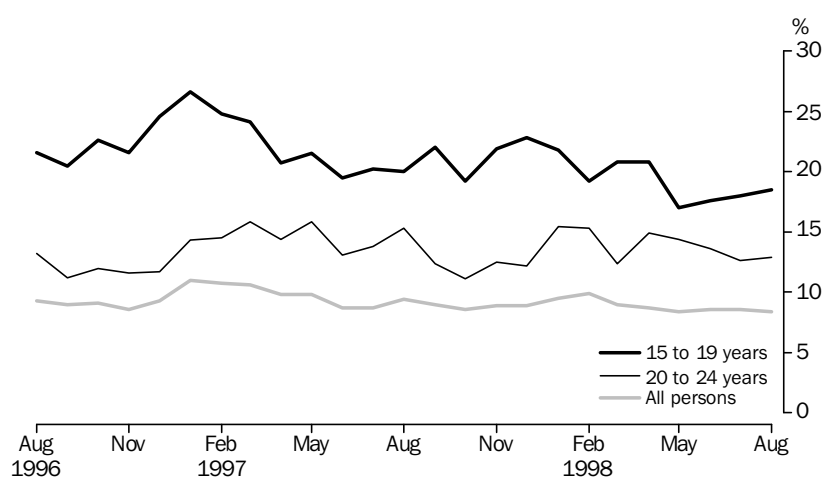


TABLE 8 — LABOUR FORCE STATUS: PERSONS AGED 15 TO 19 YEARS BY FULL-TIME ATTENDANCE AT AN EDUCATIONAL INSTITUTION, QUEENSLAND, AUGUST 1998

	<i>Employed</i>			<i>Unemployed</i>	<i>Labour force</i>	<i>Not in labour force</i>	<i>Civilian population aged 15 to 19 years</i>	<i>Unemployment rate</i>	<i>Participation rate</i>
	<i>Full-time</i>	<i>Part-time</i>	<i>Total</i>						
<i>Sex</i>	'000	'000	'000	'000	'000	'000	'000	%	%
ATTENDING NEITHER SCHOOL NOR A TERTIARY EDUCATIONAL INSTITUTION FULL-TIME									
Males	29.8	5.1	34.9	8.4	43.3	* 3.1	46.4	19.4	93.4
Females	13.0	11.7	24.6	6.2	30.8	6.1	36.9	20.0	83.4
Persons	42.7	16.8	59.5	14.6	74.1	9.2	83.3	19.6	88.9
ATTENDING A TERTIARY EDUCATIONAL INSTITUTION FULL-TIME									
Males	* 0.0	8.5	8.5	* 2.1	10.6	8.9	19.5	* 19.7	54.2
Females	* 0.0	11.3	11.3	* 1.8	13.1	10.1	23.3	* 13.7	56.4
Persons	* 0.0	19.8	19.8	3.9	23.7	19.1	42.8	16.4	55.4
ATTENDING SCHOOL									
Males	* 0.2	20.4	20.7	4.2	24.9	40.5	65.4	17.0	38.1
Females	* 0.0	21.0	21.0	4.8	25.8	37.5	63.3	18.4	40.7
Persons	* 0.2	41.5	41.7	9.0	50.7	78.0	128.7	17.7	39.4
TOTAL									
Males	30.0	34.0	64.1	14.7	78.8	52.5	131.3	18.7	60.0
Females	13.0	44.1	57.0	12.7	69.7	53.8	123.5	18.2	56.4
Persons	43.0	78.1	121.1	27.4	148.5	106.3	254.8	18.5	58.3

TABLE 9 — LABOUR FORCE STATUS: PERSONS AGED 20 TO 24 YEARS BY FULL-TIME ATTENDANCE AT A TERTIARY INSTITUTION, QUEENSLAND, AUGUST 1998

	<i>Employed</i>			<i>Unemployed</i>	<i>Labour force</i>	<i>Not in labour force</i>	<i>Civilian population aged 20 to 24 years</i>	<i>Unemployment rate</i>	<i>Participation rate</i>
	<i>Full-time</i>	<i>Part-time</i>	<i>Total</i>						
<i>Sex</i>	'000	'000	'000	'000	'000	'000	'000	%	%
NOT ATTENDING A TERTIARY EDUCATIONAL INSTITUTION FULL-TIME									
Males	81.6	10.8	92.4	13.7	106.2	6.4	112.5	12.9	94.3
Females	51.3	20.8	72.1	9.7	81.8	21.0	102.8	11.9	79.6
Persons	132.9	31.6	164.5	23.5	188.0	27.3	215.3	12.5	87.3
ATTENDING A TERTIARY EDUCATIONAL INSTITUTION FULL-TIME									
Males	* 0.8	6.8	7.6	* 2.1	9.7	10.1	19.8	* 21.8	49.0
Females	* 0.7	11.2	11.8	* 1.7	13.5	11.2	24.7	* 12.3	54.8
Persons	* 1.5	17.9	19.4	3.8	23.2	21.2	44.4	16.3	52.2
TOTAL									
Males	82.4	17.6	100.0	15.9	115.8	16.5	132.3	13.7	87.6
Females	52.0	32.0	83.9	11.4	95.3	32.1	127.5	12.0	74.8
Persons	134.4	49.5	183.9	27.3	211.2	48.6	259.8	12.9	81.3

TABLE 10 — EMPLOYED PERSONS: FULL-TIME OR PART-TIME STATUS, QUEENSLAND

Month	Females									
	Males		Married		Not married		Total		Persons	
	Full-time	Part-time	Full-time	Part-time	Full-time	Part-time	Full-time	Part-time	Full-time	Part-time
'000										
1997 —										
June	768.4	119.6	216.2	207.0	152.4	105.2	368.5	312.2	1,137.0	431.8
July	790.7	103.7	215.9	202.9	166.1	97.7	382.0	300.6	1,172.7	404.3
August	772.4	110.4	223.6	190.3	156.2	101.9	379.9	292.2	1,152.3	402.7
September	781.3	113.0	218.7	204.8	164.1	107.4	382.9	312.2	1,164.2	425.2
October	787.1	117.9	218.9	198.7	163.6	113.4	382.5	312.1	1,169.6	430.0
November	781.5	112.2	223.4	197.9	162.8	112.9	386.2	310.9	1,167.7	423.1
December	795.7	114.8	231.4	185.6	173.1	106.6	404.5	292.2	1,200.2	407.0
1998 —										
January	792.6	108.5	222.3	175.7	164.3	108.2	386.6	283.9	1,179.2	392.4
February	792.1	113.1	230.6	195.8	160.0	111.8	390.6	307.6	1,182.7	420.7
March	789.0	116.5	220.2	204.5	162.0	109.4	382.3	314.0	1,171.2	430.5
April	793.1	109.9	229.3	197.7	161.4	116.4	390.7	314.1	1,183.8	424.0
May	783.1	120.2	228.2	201.4	159.6	116.9	387.9	318.3	1,170.9	438.5
June	791.2	121.7	222.5	208.5	165.7	112.0	388.2	320.5	1,179.4	442.2
July	799.6	111.3	230.9	196.3	161.0	116.7	391.9	312.9	1,191.5	424.3
August	791.0	113.5	227.2	201.5	153.8	116.7	381.0	318.2	1,172.1	431.7
PER CENT (a)										
1997 —										
June	86.5	13.5	51.1	48.9	59.2	40.8	54.1	45.9	72.5	27.5
July	88.4	11.6	51.6	48.4	63.0	37.0	56.0	44.0	74.4	25.6
August	87.5	12.5	54.0	46.0	60.5	39.5	56.5	43.5	74.1	25.9
September	87.4	12.6	51.6	48.4	60.4	39.6	55.1	44.9	73.2	26.8
October	87.0	13.0	52.4	47.6	59.1	40.9	55.1	44.9	73.1	26.9
November	87.4	12.6	53.0	47.0	59.0	41.0	55.4	44.6	73.4	26.6
December	87.4	12.6	55.5	44.5	61.9	38.1	58.1	41.9	74.7	25.3
1998 —										
January	88.0	12.0	55.9	44.1	60.3	39.7	57.7	42.3	75.0	25.0
February	87.5	12.5	54.1	45.9	58.9	41.1	55.9	44.1	73.8	26.2
March	87.1	12.9	51.8	48.2	59.7	40.3	54.9	45.1	73.1	26.9
April	87.8	12.2	53.7	46.3	58.1	41.9	55.4	44.6	73.6	26.4
May	86.7	13.3	53.1	46.9	57.7	42.3	54.9	45.1	72.8	27.2
June	86.7	13.3	51.6	48.4	59.7	40.3	54.8	45.2	72.7	27.3
July	87.8	12.2	54.1	45.9	58.0	42.0	55.6	44.4	73.7	26.3
August	87.5	12.5	53.0	47.0	56.9	43.1	54.5	45.5	73.1	26.9

(a) Full-time and part-time as a proportion of employed persons in each category.

**TABLE 11 — EMPLOYED PERSONS: AVERAGE HOURS WORKED BY STATUS IN EMPLOYMENT,
INDUSTRY DIVISION AND OCCUPATION GROUP,
QUEENSLAND, AUGUST 1998**

<i>Status in employment, industry division and occupation group</i>	<i>Males</i>	<i>Females</i>		<i>Total</i>	<i>Persons</i>
		<i>Married</i>	<i>Not married</i>		
Status in employment					
Employers	53.0	33.2	47.3	34.8	46.6
Own account workers	41.7	28.0	38.2	30.2	38.1
Employees	39.0	29.2	28.3	28.9	34.4
Contributing family workers	23.4	10.9	15.3	11.7	15.4
Industry division					
Agriculture, forestry and fishing	48.0	28.1	40.8	32.1	42.9
Mining	45.5	* 44.1	* 57.3	51.3	46.1
Manufacturing	38.7	30.5	32.4	31.0	37.1
Electricity, gas and water supply	35.6	* 32.3	* 40.0	33.4	35.3
Construction	41.2	21.0	30.3	22.5	38.4
Wholesale trade	41.6	29.7	33.9	31.2	38.8
Retail trade	36.2	27.9	21.1	24.8	30.3
Accommodation, cafes and restaurants	36.8	34.9	23.9	29.1	32.4
Transport and storage	42.4	27.0	37.5	31.9	40.0
Communication services	38.0	30.5	26.2	28.6	35.2
Finance and insurance	44.7	28.3	35.2	30.4	35.7
Property and business services	41.7	27.9	31.6	29.5	35.9
Government administration and defence	39.6	30.8	31.6	31.1	35.7
Education	37.6	31.9	32.2	32.0	33.8
Health and community services	35.7	27.9	29.7	28.5	30.1
Cultural and recreational services	36.4	28.9	25.1	27.2	31.6
Personal and other services	38.2	29.3	29.4	29.4	33.6
Occupation group					
Managers and administrators	51.5	32.0	55.6	35.9	48.1
Professionals	41.1	33.1	35.8	34.1	37.5
Associate professionals	45.6	37.3	42.4	38.9	43.2
Tradespersons and related workers	39.7	31.0	31.1	31.0	38.9
Advanced clerical and service workers	39.6	23.8	32.1	25.8	26.9
Intermediate clerical, sales and service workers	35.0	28.1	26.8	27.6	29.5
Intermediate production and transport workers	41.2	28.7	31.7	29.9	40.0
Elementary clerical, sales and service workers	29.4	24.6	19.9	22.0	24.5
Labourers and related workers	32.3	24.4	26.0	25.1	29.7
Full-time workers	43.7	39.8	38.9	39.4	42.3
Part-time workers	14.9	16.8	15.8	16.4	16.0
Total	40.1	29.0	28.9	29.0	35.2

**TABLE 12 — EMPLOYED PERSONS: STATUS IN EMPLOYMENT, INDUSTRY DIVISION AND OCCUPATION GROUP,
QUEENSLAND, AUGUST 1998**
(’000)

Particulars	Males	Females			Persons
		Married	Not married	Total	
Status in employment					
Employers	53.4	25.6	* 3.2	28.8	82.3
Own account workers	117.7	42.1	11.2	53.3	171.1
Employees	728.8	352.7	254.3	607.0	1,335.7
Contributing family workers	4.6	8.3	* 1.8	10.1	14.6
Industry division					
Agriculture, forestry and fishing	69.8	22.7	10.4	33.1	102.9
Mining	20.9	* 1.0	* 1.3	* 2.3	23.1
Manufacturing	145.0	26.5	10.0	36.5	181.4
Electricity, gas and water supply	10.8	* 1.7	* 0.3	* 2.0	12.8
Construction	110.9	16.5	* 3.1	19.6	130.5
Wholesale trade	72.5	17.2	9.3	26.5	99.0
Retail trade	118.4	68.3	58.3	126.6	245.0
Accommodation, cafes and restaurants	35.1	21.9	25.2	47.1	82.1
Transport and storage	58.9	9.3	8.0	17.2	76.1
Communication services	17.8	4.4	* 3.4	7.7	25.6
Finance and insurance	16.3	19.1	8.6	27.8	44.1
Property and business services	80.3	41.5	31.0	72.5	152.7
Government administration and defence	25.9	13.4	8.4	21.9	47.8
Education	38.3	53.9	29.5	83.3	121.6
Health and community services	36.4	81.7	42.6	124.2	160.6
Cultural and recreational services	16.7	10.3	7.9	18.2	34.9
Personal and other services	30.7	19.4	13.4	32.8	63.5
Occupation group					
Managers and administrators	89.4	21.4	4.3	25.7	115.1
Professionals	120.6	81.8	47.6	129.4	250.0
Associate professionals	105.9	41.6	18.4	60.0	165.9
Tradespersons and related workers	192.5	11.6	7.8	19.4	211.9
Advanced clerical and service workers	5.9	52.0	15.7	67.7	73.6
Intermediate clerical, sales and service workers	74.5	126.1	84.4	210.5	284.9
Intermediate production and transport workers	150.0	9.9	7.1	17.0	167.0
Elementary clerical, sales and service workers	54.1	46.9	58.7	105.6	159.7
Labourers and related workers	111.6	37.4	26.5	63.9	175.5
Total	904.5	428.7	270.5	699.2	1,603.7

TABLE 13 — EMPLOYED PERSONS: INDUSTRY DIVISION BY OCCUPATION GROUP, QUEENSLAND, AUGUST 1998
(’000)

Industry division	Occupation group									Total
	Managers and adminis- trators	Profess- ionals	Assoc- iate profess- ionals	Trades- persons and related workers	Advan- ced clerical and service workers	Inter- mediate clerical sales and service workers	Inter- mediate product- ion and transport workers	Element- ary clerical sales and service workers	Labourers and related workers	
Agriculture, forestry and fishing	55.1	* 2.3	* 0.8	* 1.8	* 1.5	* 2.6	10.8	* 0.3	27.6	102.9
Mining	* 0.5	3.9	* 2.2	5.0	* 0.7	* 0.3	9.6	* 0.0	* 0.9	23.1
Manufacturing	11.4	10.1	8.7	57.5	4.2	16.5	36.5	* 2.0	34.5	181.4
Electricity, gas and water	* 0.3	* 2.9	* 2.4	* 2.3	* 0.5	* 2.0	* 2.1	* 0.5	* 0.0	12.8
Construction	10.1	* 1.7	6.0	56.4	10.8	7.7	18.9	* 1.3	17.5	130.5
Wholesale trade	11.4	8.1	9.1	8.2	5.4	24.5	18.3	8.9	5.1	99.0
Retail trade	* 2.5	6.2	37.5	36.1	5.1	22.0	20.8	97.0	17.8	245.0
Accommodation, cafes and restaurants	* 0.5	* 0.2	17.6	6.7	* 0.2	33.4	* 0.7	7.2	15.5	82.1
Transport and storage	* 0.8	8.2	3.7	3.8	4.4	11.7	34.2	5.6	3.9	76.1
Communication services	* 0.2	* 1.8	* 1.6	5.2	* 0.7	3.6	4.1	8.4	* 0.0	25.6
Finance and insurance	* 2.4	* 3.4	8.7	* 0.5	7.6	20.9	* 0.3	* 0.3	* 0.0	44.1
Property and business services	5.2	43.6	24.5	5.9	18.1	21.5	* 2.5	9.6	21.9	152.7
Government administration and defence	3.5	11.3	3.6	* 2.9	3.5	15.1	* 1.5	3.9	* 2.4	47.8
Education	5.7	77.1	4.2	* 1.0	* 3.1	22.2	* 0.3	* 1.6	6.5	121.6
Health and community services	4.2	54.4	16.3	* 3.2	4.6	61.4	* 1.6	* 2.4	12.6	160.6
Cultural and recreational services	* 0.7	8.1	5.9	4.2	* 0.6	7.0	* 0.5	5.7	* 2.0	34.9
Personal and other services	* 0.5	6.6	13.2	11.2	* 2.7	12.6	4.2	5.1	7.4	63.5
Total	115.1	250.0	165.9	211.9	73.6	284.9	167.0	159.7	175.5	1,603.7

TABLE 14 — UNEMPLOYED PERSONS: DURATION OF UNEMPLOYMENT, BRISBANE MAJOR STATISTICAL REGION

Duration of unemployment	1997			1998		
	June	July	August	June	July	August
MALES						
	'000	'000	'000	'000	'000	'000
Unemployed						
Under 4 weeks	8.7	4.9	4.8	7.1	7.1	7.2
4 and under 8 weeks	4.1	4.6	6.0	4.5	4.0	3.5
8 and under 13 weeks	8.0	3.8	4.2	* 2.5	5.1	5.0
13 and under 26 weeks	9.0	12.2	10.0	6.8	4.8	5.4
26 and under 52 weeks	8.5	6.9	6.7	7.1	5.9	6.5
52 weeks and over	10.3	11.9	10.8	9.2	10.2	10.6
Total	48.7	44.3	42.4	37.1	37.2	38.2
	weeks	weeks	weeks	weeks	weeks	weeks
Median duration of unemployment	14	18	21	23	17	18
FEMALES						
	'000	'000	'000	'000	'000	'000
Unemployed						
Under 4 weeks	6.0	6.4	6.3	5.3	6.2	5.7
4 and under 8 weeks	4.0	4.0	3.8	* 2.9	* 1.8	* 2.1
8 and under 13 weeks	4.9	3.5	4.9	* 2.8	* 2.4	* 2.5
13 and under 26 weeks	5.3	4.1	5.0	9.1	4.5	4.0
26 and under 52 weeks	* 2.9	4.4	6.1	4.6	5.3	4.9
52 weeks and over	5.3	* 3.1	5.1	5.7	7.5	5.0
Total	28.5	25.6	31.4	30.5	27.7	24.2
	weeks	weeks	weeks	weeks	weeks	weeks
Median duration of unemployment	11	10	13	17	22	17
PERSONS						
	'000	'000	'000	'000	'000	'000
Unemployed						
Under 4 weeks	14.8	11.4	11.1	12.4	13.3	12.9
4 and under 8 weeks	8.1	8.6	9.8	7.4	5.8	5.6
8 and under 13 weeks	12.9	7.3	9.1	5.3	7.5	7.5
13 and under 26 weeks	14.4	16.4	15.0	15.9	9.3	9.4
26 and under 52 weeks	11.4	11.3	12.8	11.7	11.3	11.4
52 weeks and over	15.6	15.0	15.9	14.9	17.7	15.6
Total	77.2	69.9	73.8	67.6	65.0	62.5
	weeks	weeks	weeks	weeks	weeks	weeks
Median duration of unemployment	14	15	18	20	19	18

TABLE 15 — UNEMPLOYED PERSONS: DURATION OF UNEMPLOYMENT, BALANCE OF QUEENSLAND

Duration of unemployment	1997			1998		
	June	July	August	June	July	August
MALES						
	'000	'000	'000	'000	'000	'000
Unemployed						
Under 4 weeks	8.7	10.0	6.0	6.0	7.8	8.1
4 and under 8 weeks	6.5	5.1	7.2	6.3	4.6	5.4
8 and under 13 weeks	11.9	5.9	5.0	4.7	* 3.0	4.3
13 and under 26 weeks	10.5	13.6	11.7	9.7	7.8	4.9
26 and under 52 weeks	8.7	7.4	9.5	7.5	13.2	11.7
52 weeks and over	15.4	14.3	13.7	15.7	18.0	17.1
Total	61.7	56.2	53.2	49.8	54.4	51.3
	weeks	weeks	weeks	weeks	weeks	weeks
Median duration of unemployment	15	16	20	24	26	28
FEMALES						
	'000	'000	'000	'000	'000	'000
Unemployed						
Under 4 weeks	8.3	8.3	6.2	6.1	5.1	5.9
4 and under 8 weeks	6.4	* 3.1	5.4	3.9	* 3.3	4.4
8 and under 13 weeks	6.3	6.4	4.5	* 2.8	3.5	* 1.7
13 and under 26 weeks	7.5	10.3	7.7	7.7	5.4	6.4
26 and under 52 weeks	4.0	5.1	7.7	4.7	4.9	7.9
52 weeks and over	10.4	8.4	8.6	9.6	9.6	7.5
Total	42.8	41.7	40.0	34.7	31.8	33.7
	weeks	weeks	weeks	weeks	weeks	weeks
Median duration of unemployment	13	14	19	21	21	22
PERSONS						
	'000	'000	'000	'000	'000	'000
Unemployed						
Under 4 weeks	17.0	18.3	12.2	12.0	12.9	13.9
4 and under 8 weeks	12.9	8.3	12.6	10.3	7.8	9.8
8 and under 13 weeks	18.2	12.3	9.5	7.5	6.5	5.9
13 and under 26 weeks	17.9	23.9	19.4	17.4	13.2	11.2
26 and under 52 weeks	12.7	12.5	17.2	12.2	18.1	19.5
52 weeks and over	25.8	22.7	22.2	25.2	27.7	24.7
Total	104.5	98.0	93.1	84.6	86.2	85.0
	weeks	weeks	weeks	weeks	weeks	weeks
Median duration of unemployment	14	15	20	22	26	26

TABLE 16 — UNEMPLOYED PERSONS: DURATION OF UNEMPLOYMENT, QUEENSLAND

Duration of unemployment	1997			1998		
	June	July	August	June	July	August
MALES						
	'000	'000	'000	'000	'000	'000
Unemployed						
Under 4 weeks	14.0	11.9	13.7	13.1	14.9	15.3
4 and under 8 weeks	6.1	9.5	11.1	10.8	8.6	8.9
8 and under 13 weeks	9.2	6.7	8.4	7.2	8.1	9.2
13 and under 26 weeks	18.9	15.1	13.6	16.5	12.6	10.3
26 and under 52 weeks	14.3	21.7	22.1	14.6	19.1	18.1
52 weeks and over	23.7	23.7	24.8	24.8	28.3	27.7
Total	86.3	88.8	93.7	86.9	91.6	89.6
	weeks	weeks	weeks	weeks	weeks	weeks
Median duration of unemployment	22	26	26	23	26	26
FEMALES						
	'000	'000	'000	'000	'000	'000
Unemployed						
Under 4 weeks	10.8	11.6	15.1	11.4	11.3	11.5
4 and under 8 weeks	6.1	7.0	9.0	6.9	5.1	6.5
8 and under 13 weeks	8.8	4.5	6.0	5.6	5.9	4.2
13 and under 26 weeks	12.9	10.8	8.5	16.8	9.9	10.4
26 and under 52 weeks	11.9	11.1	12.1	9.3	10.2	12.8
52 weeks and over	12.8	16.2	16.4	15.3	17.1	12.6
Total	63.3	61.2	67.1	65.2	59.5	57.9
	weeks	weeks	weeks	weeks	weeks	weeks
Median duration of unemployment	18	21	17	20	21	20
PERSONS						
	'000	'000	'000	'000	'000	'000
Unemployed						
Under 4 weeks	24.9	23.6	28.8	24.4	26.2	26.8
4 and under 8 weeks	12.2	16.5	20.1	17.7	13.7	15.4
8 and under 13 weeks	18.0	11.2	14.4	12.8	14.0	13.4
13 and under 26 weeks	31.7	25.9	22.1	33.3	22.5	20.7
26 and under 52 weeks	26.3	32.8	34.2	23.8	29.3	30.9
52 weeks and over	36.5	39.9	41.2	40.1	45.4	40.3
Total	149.5	150.0	160.8	152.2	151.2	147.5
	weeks	weeks	weeks	weeks	weeks	weeks
Median duration of unemployment	21	23	21	22	25	23

TABLE 17 — UNEMPLOYED PERSONS AND UNEMPLOYMENT RATES: INDUSTRY DIVISION AND OCCUPATION GROUP OF LAST FULL-TIME JOB, QUEENSLAND

Unemployment category, industry division and occupation group	August 1997		November 1997		February 1998		May 1998		August 1998	
	Number	Rate	Number	Rate	Number	Rate	Number	Rate	Number	Rate
	'000	%	'000	%	'000	%	'000	%	'000	%
Persons who had worked full-time for 2 weeks or more in the last 2 years	82.4	5.0	81.4	4.9	93.4	5.5	75.5	4.5	75.1	4.5
Industry division										
Agriculture, forestry and fishing	5.7	5.0	6.7	6.2	8.8	8.7	4.3	4.5	3.7	3.5
Manufacturing	11.1	5.8	14.1	7.5	12.6	6.7	14.2	7.5	16.0	8.1
Construction	9.7	7.6	5.6	4.3	8.9	6.4	7.6	5.5	7.1	5.1
Wholesale trade	4.1	5.1	* 3.1	* 3.7	5.8	5.9	4.5	4.2	4.4	4.3
Retail trade	14.1	5.5	14.4	5.4	16.8	6.2	11.3	4.4	12.5	4.8
Property and business services	7.3	4.7	6.8	4.1	8.5	4.9	6.7	4.1	6.3	3.9
Health and community services	3.8	2.5	4.9	3.3	4.4	2.9	3.7	2.3	* 2.8	* 1.7
Cultural and recreational services	* 2.3	* 5.5	* 2.9	* 6.7	* 1.5	* 4.1	* 2.7	* 6.8	* 1.6	* 4.3
Other industries	24.3	4.7	22.8	4.2	26.2	4.8	20.6	3.8	20.7	4.0
Occupation group										
Managers and administrators	* 0.9	* 0.7	* 2.0	* 1.7	* 1.2	* 1.1	* 1.8	* 1.6	* 1.3	* 1.1
Professionals	4.2	1.8	5.0	2.1	6.6	2.7	3.8	1.5	* 3.4	* 1.3
Associate professionals	8.8	4.7	6.6	3.5	8.1	4.5	5.2	2.8	5.9	3.4
Tradespersons and related workers	14.9	6.5	8.7	4.0	13.0	5.5	13.0	5.7	12.0	5.4
Advanced clerical and service workers	* 1.6	* 2.2	* 1.4	* 1.9	* 1.0	* 1.2	* 1.0	* 1.2	* 1.6	* 2.1
Intermediate clerical, sales and service workers	12.1	4.4	12.6	4.3	15.1	5.2	11.1	3.7	12.4	4.2
Intermediate production and transport workers	10.4	7.0	11.0	7.0	12.7	7.5	9.7	5.9	13.0	7.2
Elementary clerical, sales and service workers	10.4	5.9	8.9	4.6	10.9	5.7	7.6	4.2	8.9	5.3
Labourers and related workers	19.0	9.3	25.3	13.0	24.9	12.5	22.4	11.3	16.6	8.6
Reason for ceasing last full-time job										
Job loser										
Laid off, retrenched	31.3	..	31.8	..	36.1	..	32.0	..	30.5	..
Other	20.3	..	22.9	..	25.8	..	19.4	..	16.9	..
Job leaver	30.8	..	26.7	..	31.5	..	24.0	..	27.8	..
Other										
Persons looking for first job	12.7	..	17.4	..	14.5	..	11.3	..	12.1	..
Former workers	62.8	..	51.9	..	63.8	..	58.1	..	55.4	..
Persons stood down	* 2.9	..	5.1	..	4.8	..	* 2.4	..	4.9	..
Total	160.8	9.4	155.9	8.9	176.5	9.9	147.3	8.4	147.5	8.4
Looking for full-time work	131.5	10.2	122.2	9.5	140.9	10.6	117.1	9.1	115.9	9.0
Looking for part-time work	29.3	6.8	33.6	7.4	35.5	7.8	30.2	6.4	31.6	6.8

SPECIAL SURVEYS DATA

Although emphasis in the population survey is placed on the regular collection of demographic and labour force characteristics data, supplementary and special surveys of particular aspects of the labour force are carried out from time to time. The results of these surveys on labour force and related topics are published separately as shown below. All publications refer to Australia.

<i>Title of publication</i>	<i>Latest data</i>	<i>Catalogue No.</i>
Annual and Long Service Leave Taken	May 1988 to April 1989	6317.0
Career Experience	November 1996	6254.0
Career Paths of Persons with Trade Qualifications	1993	6243.0
Career Paths of Qualified Nurses	March to July 1989	6277.0
Child Care	March 1996	4402.0
Employment Benefits	August 1994	6334.0.40.001
Job Search Experience of Unemployed Persons	July 1997	6222.0
Labour Force Experience	February 1997	6206.0
Labour Force Status and Educational Attainment	February 1994	6235.0
Labour Force Status and Other Characteristics of Families	June 1997	6224.0
Labour Force Status and Other Characteristics of Migrants	November 1996	6250.0
Labour Mobility	February 1998	6209.0
Multiple Jobholding	August 1997	6216.0
Participation in Education (<i>formerly</i> Labour Force Status and Educational Attendance)	September 1997	6272.0
Persons Employed at Home	September 1995	6275.0
Persons Not in the Labour Force	September 1997	6220.0
Persons Who Had Re-entered the Labour Force	July 1995	6264.0.40.001
Persons Who Have Left the Labour Force	September 1994	6267.0.40.001
Retrenchment and Redundancy	July 1997	6266.0
Retirement and Retirement Intentions	November 1997	6238.0
Successful and Unsuccessful Job Search Experience	July 1996	6245.0
Superannuation	November 1995	6319.0
Survey of Income and Housing Costs and Amenities	1989-90	6546.0
Trade Union Members	August 1996	6325.0
Training and Education Experience (<i>formerly</i> How Workers Get Their Training)	1993	6278.0
Transition from Education to Work	May 1997	6227.0
Underemployed Workers	September 1997	6265.0
Weekly Earnings of Employees (Distribution)	August 1997	6310.0
Working Arrangements	August 1997	6342.0

LABOUR FORCE SUPPLEMENTARY SURVEY PROGRAM — 1998

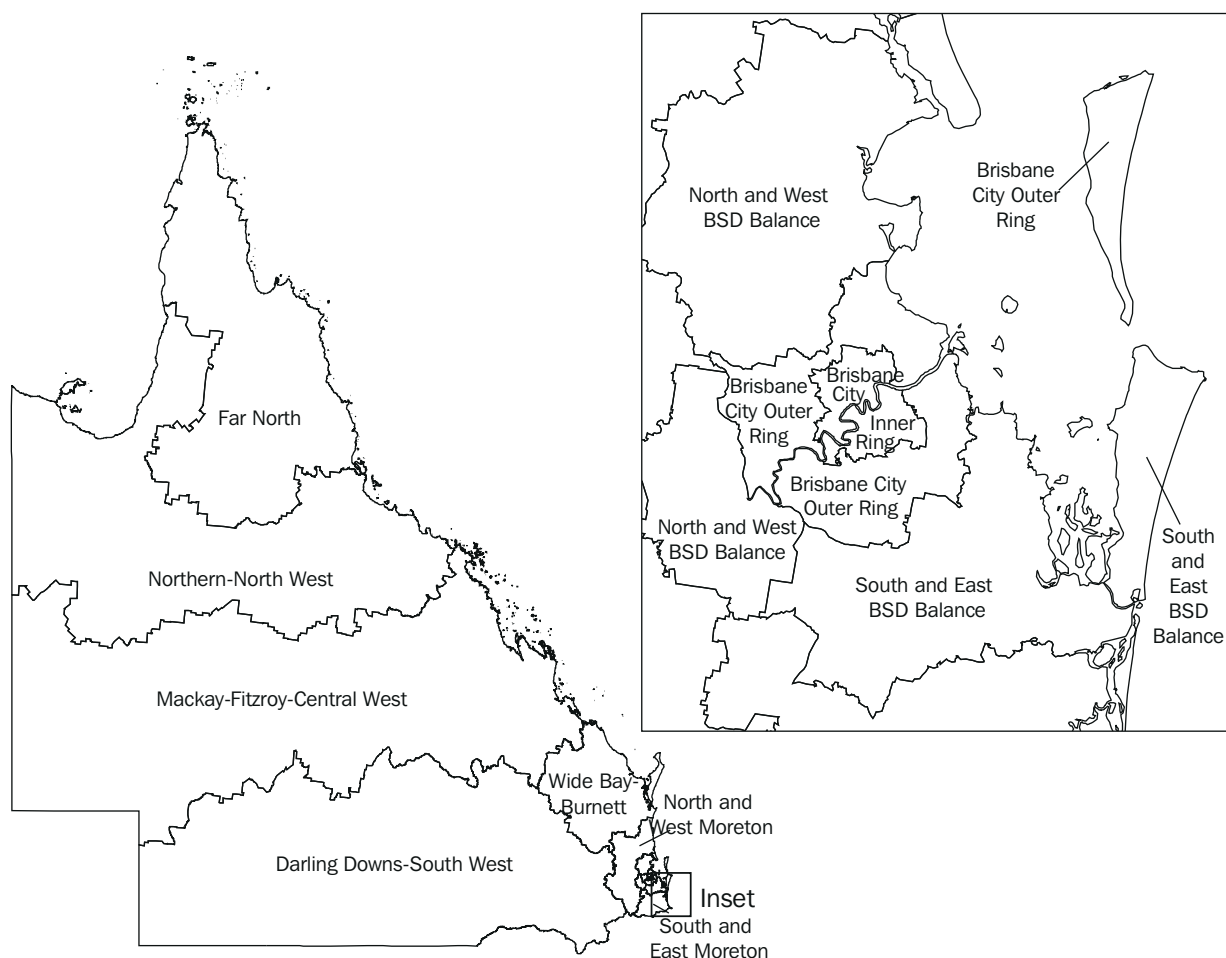
<i>Topic</i>	<i>Survey month</i>
Labour Mobility	February 1998
Transition from Education to Work	May 1998
Job Search Experience of Unemployed Persons	July 1998
Successful and Unsuccessful Job Search Experience	July 1998
Multiple Jobholding	July 1998
Weekly Earnings	August 1998
Employment Benefits	August 1998
Trade Union Members	August 1998
Non-standard Employment	August 1998
Persons Not in the Labour Force	September 1998
Underemployment	September 1998
Participation in Education	September 1998
Career Experience	November 1998

RELEASES OF INTEREST

Labour Mobility, Australia, February 1998 (6209.0), (\$18.50). Provides information on persons aged 15 to 69 years who had worked at some time during the year ending February 1998. Details of job mobility, job tenure, number of employers or businesses during the year and reason for ceasing last job or changing locality are presented. Occupation, industry and duration of current and last job are also available.

Retrenchment and Redundancy, Australia, July 1997 (6266.0), (\$21.00). Provides information on the number and characteristics of persons who have been retrenched or accepted redundancy packages across Australia in the 3 years to 30 June 1997. Data are cross-classified by demographic variables, such as age, birthplace, sex and educational attainment. Details are also provided on the job from which retrenched, such as industry, occupation and time with employer. Information relating to labour force activity since retrenchment includes job search experience, involvement in labour market programs and labour force status at 30 June 1997.

STATISTICAL REGIONS, QUEENSLAND



BRISBANE CITY INNER RING

Albion	Clayfield	Highgate Hill	Red Hill
Alderley	Coorparoo	Holland Park	Sherwood
Annerley	Corinda	Holland Park West	South Brisbane
Ascot	Dutton Park	Indooroopilly	Spring Hill
Ashgrove	East Brisbane	Kangaroo Point	St Lucia
Balmoral	Enoggera (including	Kedron	Stafford
Bardon	Military Camp)	Kelvin Grove	Stafford Heights
Bowen Hills	Fairfield	Lutwyche	Taringa
Bulimba	Fortitude Valley - Inner	Milton	Tarragindi
Camp Hill	Fortitude Valley - Remainder	Moorooka	Toowong
Cannon Hill	Graceville	Morningside	West End
Carina	Grange	New Farm	Wilston
Carina Heights	Greenslopes	Newmarket	Windsor
Carindale	Hamilton	Newstead	Woolloongabba
Chelmer	Hawthorne	Norman Park	Woolloowin
City - Inner	Hendra	Nundah	Yeerongpilly
City - Remainder	Herston	Paddington	Yeronga

EXPLANATORY NOTES

POPULATION SURVEY

1 This survey is based on a multi-stage area sample of private dwellings and non-private dwellings (hotels, motels, etc.) and usually covers approximately three-fifths of 1% of the population of Queensland. The information is obtained from the occupants of selected dwellings by carefully chosen and specially trained interviewers. The interviews are generally conducted during a period of 2 weeks beginning on the Monday between the 6th and 12th of each month. The information obtained relates to the week before the interview (i.e. the reference week).

SCOPE

2 The labour force survey includes all persons aged 15 years and over except:

- members of the permanent defence forces,
- certain diplomatic personnel of overseas governments, customarily excluded from census and estimated populations,
- overseas residents in Australia and
- members of non-Australian defence forces (and their dependants) stationed in Australia.

COVERAGE

3 In the labour force survey, coverage rules are applied which aim to ensure that each person is associated with only one dwelling and hence has only one chance of selection. The coverage rules are, necessarily, a balance between theoretical and operational considerations. Nevertheless, the chance of a person being enumerated at two separate dwellings in the one survey is considered to be negligible.

4 Persons who are away from their usual residence for 6 weeks or less at the time of interview are enumerated at their usual residence when relevant information can be obtained from other usual residents present at the time of the survey.

SUPPLEMENTARY AND SPECIAL SURVEYS

5 Emphasis in the population survey is placed on the regular collection of specific data on demographic and labour force characteristics of the population. However, supplementary and special surveys of particular aspects of the labour force, or of other subjects, are carried out from time to time. Statistics from these surveys are published and are available on request. A list of survey publications on labour force and related topics is shown on page 21.

POPULATION BENCHMARKS

6 Labour force survey estimates of persons employed, unemployed and not in the labour force are calculated in such a way as to add up to the independently estimated distribution of the population aged 15 years and over by age and sex. This procedure compensates for under-enumeration in the survey and leads to more reliable estimates. The independent population statistics (benchmarks) are the latest available estimates at the time the labour force survey is conducted. They usually differ from the official population estimates subsequently published in the quarterly ABS publication *Australian Demographic Statistics* (3101.0) because they are necessarily derived from incomplete information about population changes.

7 Since regular estimates of the population are not available at the regional level, the State benchmarks were used to produce regional estimates. This

EXPLANATORY NOTES *continued*

methodology assumes a common pattern of under-enumeration at the regional level and also ensures that regional estimates add to the State totals.

8 While this procedure can be expected to provide reliable estimates of unemployment and participation rates, it cannot be taken as completely reliable for estimates of numbers involved. For this reason, estimates of numbers in each region have not been added to provide an estimate of the total civilian population aged 15 years and over.

REVISION OF SERIES

9 Survey estimates are not revised for the usually small amendments of population benchmarks arising from new data on deaths and overseas and internal migration. Revisions are made, however, after each census of population and housing and when population estimation bases are reviewed. These revisions affect unadjusted, seasonally adjusted and trend estimates. The last such revision was made in February 1994 to take account of the results of the 1991 Census of Population and Housing. This affected all the monthly estimates from January 1989 to January 1994.

10 The estimates shown in this publication are based entirely on place of usual residence. Prior to October 1982, the estimates were based on a combination of place of enumeration and place of usual residence.

11 Until February 1978, surveys were conducted in February, May, August and November each year from 1964. From February 1978 the survey has been conducted on a monthly basis.

12 The questionnaire used in the survey for the collection of labour force data has been revised a number of times. Details of these changes have been published in *Information Paper: Questionnaires Used in the Labour Force Survey* (6232.0) in March 1978, December 1981, August 1984, June 1986, June 1991 and March 1993.

COMPARABILITY OF SERIES

13 As noted in paragraph 9, estimates from January 1989 have been revised to conform to revised population estimates following the 1991 Census of Population and Housing and are thus not strictly comparable with estimates for periods prior to January 1989, which have not been revised.

14 From August 1996, occupation data are classified according to the new edition of the Australian Standard Classification of Occupations (ASCO) and are not comparable with previous information. For more detailed information see *ASCO — Australian Standard Classification of Occupations, Information Paper* (1221.0). A concordance between these versions of ASCO is not yet available.

15 Regional estimates are based on statistical regions from September 1987. They are not comparable with estimates prior to that date which were based on differently composed dissemination regions.

16 Comparability with estimates produced from the quarterly survey of employment and earnings is affected by the use of a different survey methodology and definitions. The labour force survey provides estimates of people in jobs whereas the survey of employment and earnings provides an estimate of the number of jobs held by employees. A more detailed description of the differences between these two series is provided in *Information Paper: Comparison of Employment Estimates from the Labour Force Survey and the Survey of Employment and Earnings* (6263.0).

RELIABILITY OF ESTIMATES

- 17** Estimates in this publication are subject to two sources of error.
- *Sampling error.* Since the estimates are based on information obtained from occupants of a sample of dwellings, they and the movements derived from them, may differ from the figures that would have been produced if all dwellings had been included in the survey. More information on this topic is given in the Technical Notes.
 - *Non-sampling error.* Inaccuracies may occur because of imperfections in reporting by respondents and interviewers and errors made in coding and processing data. These inaccuracies may occur in any enumeration, whether it be a full count or a sample. Every effort is made to reduce the non-sampling error to a minimum by careful design of questionnaires, intensive training and supervision of interviewers and efficient operating procedures.

RELIABILITY OF REGIONAL LABOUR FORCE ESTIMATES

- 18** While the Labour Force Survey is designed primarily to produce reliable estimates at the national and State or Territory level, it also delivers estimates for a number of regions within States.
- 19** As with the national and State estimates, regional labour force estimates are subject to sampling error. Since estimates for regions are components of the corresponding State level and thus are based on a considerably smaller sample size, they are subject to higher relative standard errors. Care should therefore be taken in the interpretation of regional estimates, particularly when comparing month-to-month movements. Tables of standard errors for each region are available later in this publication.

SURVEY SAMPLE REDESIGN

- 20** The ABS has reselected the Labour Force Survey sample to incorporate information obtained from the 1996 Census of Population and Housing. The new sample was introduced over an 8 month period, from September 1997 until April 1998, in order to minimise possible effects on the continuity of key labour force statistics. Details of the new sample, and the sample design and methodology of the survey, are given in *Information Paper: Labour Force Survey Sample Design* (6269.0).
- 21** Regional labour force statistics are subject to significant volatility and are especially vulnerable at the time of reselection of the Labour Force survey sample, as the new sample selected to represent each region may have characteristics different from the old sample. Consequently, it can be expected that some regional series may suffer quite noticeable disturbances during the period September 1997 to April 1998. Thus, regional estimates from September 1997 onwards may not be comparable with those before September 1997.

STATISTICAL REGIONS

- 22** From September 1997, Labour Force dissemination regions are classified according to *Australian Standard Geographical Classification, 1996 Edition* (1216.0).
- 23** A review of dissemination regions for labour force data was conducted during 1996. As a result, the boundaries for some regions have been changed to maintain consistency with the ASGC. Details of the new labour force regions are given in *Information Paper: Regional Labour Force Statistics* (6262.0).

24 An additional dissemination region has become available for the Gold Coast — Gold Coast City (Parts A and B) Statistical Region Sectors. This new region is formed from parts of the South and East BSD Balance and South and East Moreton Statistical Regions. The latter regions have not changed and data will continue to be available for them.

25 The Brisbane City Outer Ring Statistical Region has been enlarged to include part of Carole Park, formerly of North and West BSD Balance Statistical Region. Consequently, estimates of the labour force in these regions are expected to change by 1,000 persons.

SEASONAL ADJUSTMENT

26 Seasonal adjustment is a means of removing the estimated effects of normal seasonal variation from the series so that the effect of other influences on the series can be more clearly recognised. Seasonal adjustment does not remove the irregular or non-seasonal influences which may be present in any particular month. Influences that are volatile can still make it difficult to interpret the movement of the series even after adjustment for seasonal variation. Seasonal factors are reviewed annually to take account of each additional year of original data.

TREND ESTIMATION

27 Smoothed seasonally adjusted series produce a measure of trend by reducing the impact of the irregular component of the series. The trend estimates are derived by applying a 13-term Henderson-weighted moving average to the respective seasonally adjusted series. These trend series are used to analyse the underlying behaviour of the series over time.

28 While this smoothing technique enables estimates to be produced which include the latest month, it does result in revisions to the most recent months as additional observations become available. Generally, subsequent revisions become smaller and after 3 months have a negligible impact on the series. There will also be revisions as a result of the annual review of seasonal factors.

MONTH-TO-MONTH MOVEMENTS

29 Care should be taken in the interpretation of month-to-month movements in labour force survey estimates as they are subject to sampling and non-sampling variability as explained in paragraph 17.

RELATED PUBLICATIONS

30 Other ABS publications which may be of interest include:

Information Paper: A Guide to Interpreting Time Series — Monitoring 'Trends' — An Overview (1348.0)

Information Paper: Comparison of Employment Estimates from the Labour Force Survey and the Survey of Employment and Earnings (6263.0)

Information Paper: Labour Force Survey — Measuring Teenage Unemployment (6270.0)

Information Paper: Labour Force Survey — Sample Design (6269.0)

Information Paper: Measuring Employment and Unemployment (6279.0)

Information Paper: Regional Labour Force Statistics (6262.0)

Labour Force, Australia (6203.0)

EXPLANATORY NOTES *continued*

Labour Force, Australia, Preliminary (6202.0)

Monthly Summary of Statistics, Queensland (1304.3)

31 Current publications produced by the ABS are listed in the *Catalogue of Publications and Products* (1101.0). The ABS also issues the *Release Advice* (1105.0) on Tuesdays and Fridays which lists publications to be released in the next few days. Both the Catalogue and the *Release Advice* are available from any ABS office.

UNPUBLISHED STATISTICS

32 As well as the statistics included in this and related publications, the ABS may have other relevant unpublished data available. Inquiries should be made to the contact phone number shown at the front of this publication.

ROUNDING

33 Where figures have been rounded, discrepancies may occur between totals and the sums of the component items.

SYMBOLS AND OTHER USAGES

- .. not applicable
- * subject to sampling variability too high for most practical purposes
(see paragraphs 8 and 9 of the Technical Notes)

TECHNICAL NOTES

ESTIMATION PROCEDURE

1 The labour force estimates are derived from the monthly population survey by use of a complex ratio estimation procedure, which ensures that the survey estimates conform to an independently estimated distribution of the population by age and sex, rather than to the age and sex distribution within the sample itself. This procedure compensates for under-enumeration in the survey and leads to more reliable estimates.

2 Since regular estimates of the population are not available at the regional level, the State benchmarks were used to produce regional estimates. This methodology assumes a common pattern of under-enumeration at the regional level and also ensures that regional estimates add to the State totals.

DATA QUALITY

3 Two types of error are possible in an estimate based on a sample survey: sampling error and non-sampling error. Non-sampling error is explained in the Explanatory Notes, paragraph 17. The sampling error is a measure of the variability that occurs by chance because a sample, rather than the entire population, is surveyed.

Standard error of estimates

4 One measure of the variability of estimates which occurs as a result of surveying only a sample of the population is the standard error (SE).

5 There are about two chances in three that a sample estimate will differ by less than one standard error from the figure that would have been obtained if all dwellings had been included and about 19 chances in 20 that the difference will be less than two standard errors.

6 The standard error of an estimate can be obtained from table A. Linear interpolation should be used to calculate the standard error of estimates falling between the sizes of estimates listed in the table (see example in paragraphs 12 and 13 following).

7 Standard errors for some estimates, e.g. unemployment, can vary from those shown in the tables. Methods for calculating the standard errors of these estimates are shown in paragraph 14.

Relative standard error

8 Another measure of sampling variability is the relative standard error (RSE). This is obtained by expressing the standard error as a percentage of the estimate to which it refers. The RSE is a useful measure in that it provides an immediate indication of the percentage errors likely to have occurred due to sampling and thus avoids the need to refer also to the size of the estimate.

9 In the tables in this publication, only estimates with RSEs of 25% or less, and percentages based on such estimates, are considered sufficiently reliable for most purposes. However, estimates and percentages with larger RSEs have been included and are preceded by an asterisk (e.g. * 3.0) to indicate they are subject to high standard errors and should be used with caution. Small estimates are subject to such high standard errors (relative to the size of the estimate) as to detract seriously from their value for most reasonable use.

Standard error of movement

10 The movement in the level of an estimate is also subject to sampling variability. The standard error of the movement depends on the levels of the estimates from which the movement is obtained rather than the size of the movement. Standard errors of monthly movements are given in table B. These estimates apply only to estimates of movements between two consecutive months.

11 Movements between corresponding months of consecutive quarters, i.e. quarterly movements, can be obtained by multiplying the figures in table B by 1.21. Standard errors of movements between corresponding months of consecutive years, i.e. annual movements, can be obtained by multiplying the figures in table A by 1.3. When using tables A or B to calculate standard errors of movements, refer to the larger of the two estimates from which the movement is derived.

LINEAR INTERPOLATION

12 Linear interpolation is used to determine the standard error of an estimate which falls between two values listed in the size of estimate column in tables A or B. Linear interpolation is best described using an example. In August 1998 there were 699,200 (X_e) employed females in Queensland. This estimate falls between 500,000 (X_l) and 1,000,000 (X_u) in table A.

13 The standard error of the estimate is determined as follows:

Firstly calculate

$$\begin{aligned} F &= \frac{X_e - X_l}{X_u - X_l} \\ &= \frac{699,200 - 500,000}{1,000,000 - 500,000} \\ &= 0.398 \end{aligned}$$

Secondly, calculate the standard error of the estimate, $SE(X_e)$ thus,

$$\begin{aligned} SE(X_e) &= SE(X_l) + F[SE(X_u) - SE(X_l)] \\ &= 7,000 + 0.398[8,900 - 7,000] \\ &= 7,757 \\ &= 7,800 \text{ rounding to the nearest 100} \end{aligned}$$

Therefore the standard error of the number of employed females in Queensland in August 1998 (699,200) is 7,800.

14 Standard errors for selected estimates may be calculated as follows.

<i>Measure of reliability to be determined</i>	<i>Method</i>
Standard errors of estimates of employed persons.	Determine the SE from Table A directly.
Standard errors of estimates of unemployed persons.	Multiply the SE from Table A by 0.97.
Standard errors of estimates of persons not in the labour force.	Multiply the SE from Table A by 1.06.
Standard errors of rates (e.g. the unemployment rate which is based on the number of unemployed persons expressed as a percentage of the number of persons in the labour force).	Determine the RSE of the numerator (x) and the denominator (y) then apply the following formula. $RSE(x/y) = \sqrt{[RSE(x)]^2 + [RSE(y)]^2}$
Standard error of average hours worked.	Determine the RSE for the number of persons on which the average is based, multiply this by 0.7.
Standard error of median duration of unemployment.	Determine the RSE for the number of persons on which the median is based, multiply this by 2.0.
Standard error of monthly movements.	Using Table B, look up the SE of the larger estimate.
Standard error of quarterly movements.	Determine the standard error of the larger estimate (using Table A), multiply this by 1.21.
Standard error of annual movements.	Determine the standard error of the larger estimate (using Table A) and multiply this by 1.3.

[illegible]

B

STANDARD ERRORS OF MONTHLY MOVEMENTS FOR STATISTICAL REGIONS AND QUEENSLAND

Size of estimate	Brisbane (MSR) Statistical Regions						Balance of Queensland Statistical Regions						
	Queensland; Brisbane (MSR);		Brisbane City		South and East Brisbane	North and West Brisbane	South and East		North and	Wide	Darling	Mackay,	Northern
	Balance of Queensland		Inner Ring	Outer Ring	Statistical Division Balance	Statistical Division Balance	Moreton	West Moreton	Bay-Burnett		Downs and South-West	Fitzroy and Central-West	and North-West
	No.	%	No.	No.	No.	No.	No.	No.	No.	No.	No.	No.	No.
1 000	580	58.0	330	310	250	320	290	300	340	320	340	320	290
1 500	660	44.0	400	370	300	380	340	350	400	390	410	390	340
2 000	730	36.5	450	420	340	440	390	400	460	440	460	440	390
2 500	790	31.6	500	470	370	480	430	440	500	480	510	480	430
3 000	840	28.0	540	510	400	520	460	480	550	520	550	520	460
4 000	930	23.3	610	570	460	590	530	540	620	590	620	590	530
5 000	1 000	20.0	670	630	500	650	580	600	680	650	680	650	580
7 000	1 150	16.4	770	730	580	750	670	690	790	760	790	750	670
10 000	1 250	12.5	900	850	680	880	780	810	920	880	920	880	780
15 000	1 450	9.7	1 100	1 000	810	1 050	930	960	1 100	1 050	1 100	1 050	930
20 000	1 600	8.0	1 200	1 150	920	1 200	1 050	1 100	1 250	1 200	1 250	1 200	1 050
30 000	1 850	6.2	1 450	1 350	1 100	1 400	1 250	1 300	1 500	1 400	1 500	1 400	1 250
50 000	2 200	4.4	1 800	1 700	1 350	1 750	1 550	1 600	1 850	1 750	1 850	1 750	1 550
100 000	2 800	2.8	2 450	2 300	1 850	2 400	2 100	2 200	2 500	2 400	2 500	2 400	2 150
200 000	3 550	1.8	3 300	3 150	2 500	3 200	2 850	2 950	3 350	3 250	3 400	3 200	2 850
300 000	4 100	1.4	3 950	3 750	2 950	3 850	3 400	3 550	4 000	3 850	4 050	3 850	3 450

GLOSSARY

Attending school	Persons aged 15 to 19 years who, during the reference week, were enrolled full-time at secondary or high schools.
Attending tertiary educational institution full-time	Persons aged 15 to 24 years who, during the reference week, were enrolled full-time at a TAFE college, university or other educational institution.
Average hours worked	Aggregate hours worked by a group divided by the number of persons in that group.
Average duration of unemployment	For a group of unemployed persons, the aggregate duration of unemployment divided by the number of persons in the group.
Duration of unemployment	The period from the time a person began looking for work or was stood down, to the end of the reference week. Thus the survey measures current (and continuing) periods of unemployment rather than completed spells. For persons who may have begun looking for work while still employed, the duration of unemployment is defined as the period from the time the person last worked full-time for 2 weeks or more to the end of the reference week.
Employed	Persons aged 15 years and over who, during the reference week: <ul style="list-style-type: none"> ■ worked for 1 hour or more for pay, profit, commission or payment in kind in a job or business or on a farm (comprising employees, employers and own account workers); ■ worked for 1 hour or more without pay in a family business or on a farm (i.e. contributing family workers); ■ were employees who had a job but were not at work and were: on paid leave; on leave without pay for less than 4 weeks up to the end of the reference week; stood down without pay because of bad weather or plant breakdown at their place of employment for less than 4 weeks up to the end of the reference week; on strike or locked out; on workers' compensation and expected to be returning to their job; receiving wages or salary while undertaking full-time study or ■ were employers, own account workers or contributing family workers who had a job, business or farm, but were not at work.
Former workers	Unemployed persons who have previously worked full-time for 2 weeks or more but not in the past 2 years.
Full-time workers	Employed persons who usually worked 35 hours or more a week (in all jobs) and others who, although usually working less than 35 hours a week, worked 35 hours or more during the reference week.
Hours worked	The total number of hours a group of employed persons has actually worked during the reference week, not necessarily hours paid.
Job leavers	Unemployed persons who have worked full-time for 2 weeks or more in the past 2 years and <i>left that job voluntarily</i> , that is, because of unsatisfactory work arrangements, pay or hours; the job was seasonal, temporary or a holiday job and they left that job to return to studies; their last job was running their own business and they closed down or sold that business for reasons other than financial difficulties, or any other reasons.

Job losers Unemployed persons who have worked full-time for 2 weeks or more in the past 2 years and *left that job involuntarily*, that is, were laid off or retrenched from that job; left that job because of their own ill-health or injury; the job was seasonal or temporary and they did not leave that job to return to studies, or their last job was running their own business and the business closed down from financial difficulties.

Industry From August 1994, Labour Force Survey industry data are classified according to the Australian and New Zealand Standard Industrial Classification (ANZSIC). Like the previous Australian Standard Industrial Classification (ASIC), ANZSIC classifies businesses according to their economic activities, in a structure consisting of four levels (Division, Sub-division, Group and Class). Labour Force Survey data are coded at the group level, as was the practice under ASIC. To assist users in making comparisons with previously published data, a concordance was developed which shows for each ASIC Group, the corresponding ANZSIC Group or Groups. The concordance also shows the estimated employment attributable to each ANZSIC Group, compared with ASIC Group data, according to establishment unit employment data on the ABS Business Register at May 1994. Historical estimates of employment by ANZSIC Group have been compiled on the basis of the concordance, and are available on request. For further information about the application of ANZSIC, see *Information Paper: Labour Force Survey: Introduction of ANZSIC for Industry Data* (6259.0) and *Australian and New Zealand Standard Industry Classification, 1993* (1292.0).

It has since been found that the concordance, which was based on preliminary investigations, did not provide the most appropriate conversion for certain Group level industries. An improved concordance has now been applied to historical Labour Force Survey estimates.

This concordance is published in the *Information Paper: Labour Force Survey: Revisions to Historical ANZSIC Industry Data* (6259.0).

Labour force For any group, persons who were employed or unemployed, as defined.

Labour force status A classification of the civilian population aged 15 years and over into employed, unemployed or not in the labour force, as defined. The definitions conform closely to the international standard definitions adopted by the International Conferences of Labour Statisticians.

Marital status Persons are classified as married (husband and wife) if they are reported as being married (including de facto) and their spouse was a usual resident of the household at the time of the survey. The not married category comprises persons who have never married, or are separated, widowed or divorced, as well as those who, although reported as being married, did not have a spouse who usually lived in the household.

Median duration of unemployment The duration which divides unemployed persons into two equal groups, one comprising persons whose duration of unemployment is above the median and the other, persons whose duration is below it.

Not in the labour force Persons who were not in the categories employed or unemployed, as defined. They include persons who were keeping house (unpaid), retired, voluntarily inactive, permanently unable to work, persons in institutions (hospitals, jails, sanatoriums, etc.), trainee teachers, members of contemplative religious orders

and persons whose only activity during the reference week was jury service or unpaid voluntary work for a charitable organisation.

Occupation From August 1996, Labour Force Survey occupation data are classified according to the Australian Standard Classification of Occupations (ASCO) Second Edition, a detailed description of which appears in *ASCO — Australian Standard Classification of Occupations, Information Paper* (1221.0). The new version of the classification replaces ASCO First Edition, which was adopted in the survey in August 1986.

Participation rate For any group, the labour force expressed as a percentage of the civilian population aged 15 years and over in the same group. Participation rates for persons classified by birthplace are calculated using population estimates which exclude those in institutions. Participation rates for persons classified by school or tertiary educational institution attendance are calculated using population estimates which include those in institutions.

Part-time workers Employed persons who usually worked less than 35 hours a week and who did so during the reference week.

Seasonally adjusted series A time series of estimates with the estimated effects of normal seasonal variation removed. See paragraph 26 of the Explanatory Notes for more detail.

Statistical regions Classified according to the *Australian Standard Geographical Classification, Edition 2.5* (1216.0).

Status in employment From August 1994, the Labour Force Survey has adopted the international classification of Status in Employment, previously referred to as Status of Worker in the survey. This change follows recommendations of the 15th International Conference of Labour Statisticians and ABS standards. For the Labour Force Survey, the change involves no changes in definitions. The only changes are to the classification titles, as follows:

<i>Status of worker</i>	<i>Status in employment</i>
Wage and salary earner	Employee
Employer	Employer
Self-employed	Own account worker
Unpaid family helper	Contributing family worker

Trend series A smoothed seasonally adjusted series of estimates. See paragraphs 27 and 28 of the Explanatory Notes for more detail.

Unemployed Persons aged 15 years and over who were not employed during the reference week and:

- had actively looked for full-time or part-time work at any time in the 4 weeks up to the end of the reference week and:
 - ◆ were available for work in the reference week or would have been available except for temporary illness (i.e. lasting for less than 4 weeks to the end of the reference week);
 - ◆ were waiting to start a new job within 4 weeks from the end of the reference week and would have started in the reference week if the job had been available then or

- were waiting to be called back to a full-time or part-time job from which they had been stood down without pay for less than 4 weeks up to the end of the reference week (including the whole of the reference week) for reasons other than bad weather or plant breakdown.

Unemployed persons classified by industry and occupation	Unemployed persons who had worked full-time for 2 weeks or more in the last 2 years are classified according to the industry and occupation of their most recent full-time job.
Unemployed looking for full-time work	Unemployed persons who actively looked for full-time work or were to resume a full-time job, from which they had been stood down.
Unemployed looking for part-time work	Unemployed persons who had actively looked for part-time work only or were to resume a part-time job, from which they had been stood down.
Unemployment rate	For any group, the number of unemployed persons expressed as a percentage of the labour force in the same group.

SELF-HELP ACCESS TO STATISTICS

- PHONE* Call 1900 986 400 for the latest statistics on CPI, Labour Force, Earnings, National Accounts, Balance of Payments and other topics. (Call cost is 75c per minute)
- INTERNET* <http://www.abs.gov.au>
- LIBRARY* A range of ABS publications is available from public and tertiary libraries Australia wide. Contact your nearest library to determine whether it has the ABS statistics you require.

WHY NOT SUBSCRIBE?

- PHONE* +61 1300 366 323
- FAX* +61 3 9615 7848

CONTACTING THE ABS

ABS provides a range of services, including: a telephone inquiry service; information consultancy tailored to your needs; survey, sample and questionnaire design; survey evaluation and methodological reviews; and statistical training.

<i>INQUIRIES</i>	<i>By phone</i>	<i>By fax</i>
Canberra	02 6252 6627	02 6253 1404
Sydney	02 9268 4611	02 9268 4668
Melbourne	03 9615 7755	03 9615 7798
Brisbane	07 3222 6351	07 3222 6283
Perth	08 9360 5140	08 9360 5955
Adelaide	08 8237 7400	08 8237 7566
Hobart	03 6222 5800	03 6222 5995
Darwin	08 8943 2111	08 8981 1218

POST Client Services, ABS, PO Box 10, Belconnen, ACT 2616

EMAIL client.services@abs.gov.au



2620130008981
ISSN 0313-1912

RRP \$18.00